



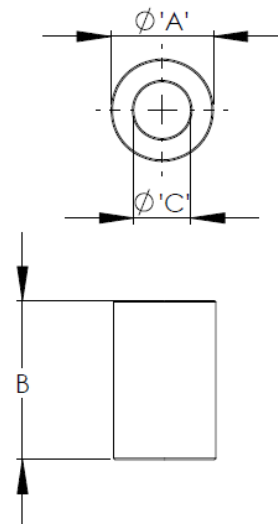
## Product Description: Ferrite sleeve

### Applications

Replacement ferrite sleeve, fitted within controller/programmer units for reducing the effects of electromagnetic interference induced into thermocouple input, compensating cables.

### Dimensions

A = 16mm  
B = 28mm  
C = 9mm



### Impedance ( $\Omega$ )

25MHz: 104  $\Omega$   
100MHz: 178  $\Omega$

